

# ZOELLNER ARTS CENTER

LEHIGH UNIVERSITY

2023 **2024**

PLAYBILL





Photo By John Kish IV

## DEAR FRIENDS,

This season, I am thinking about our future makers and ways to make art together. The stories on our stages, both inside and beyond the building, offer an opportunity to hear new voices and diverse perspectives from world-class artists and talented Lehigh students.

Sphinx Virtuosi opens the Presenting Series with an exciting program highlighting the excellence of Black and Latinx performers and

composers. The San Diego Symphony graces our stage to premiere a new work by Carlos Simon, the Kennedy Center's composer-in-residence, the night before they debut it in Carnegie Hall.

The imaginative Momix celebrates its 40th anniversary with a fantastical version of *Alice in Wonderland*. The Vienna Boys Choir rings in the holidays with traditional songs in Packer Memorial Church. Mermaid Theater's *The Rainbow Fish* is a delight for audiences of all ages. Lehigh Music Department Chair Paul Salerni conducts a live orchestra for Nimbus Dance's contemporary interpretation of Copland's *Appalachian Spring*.

The university's music and theatre departments continue to amplify students' talents with the artistic vision of our esteemed faculty. See the future makers share their creativity this season.

We understand the importance of building our future audiences. Our Family Series partnership with the Lehigh Valley Reilly Children's Hospital ensures engagement continues with our second annual fun-filled Family Day.

Strike Anywhere Performance Ensemble joins us for a year-long residency, building dialogue and collaboration in the community beyond our building. The ensemble activates spaces with art by listening to individuals and turning their stories into a devised play that will be seen throughout Bethlehem's South Side neighborhood, weaving the campus and community together with a beautiful performance.

How excited I am that Zoellner Arts Center's 2023-2024 season adds to the vibrant arts scene in the Lehigh Valley and is a conduit to bring the area's rural, suburban and urban communities together. Thank you for your continued support. Arts have an impact in our community because of you.

*Mark Fitzgerald Wilson*

Executive Director

# THANK YOU

Leadership Funding:  
**Victoria E. and Robert E. Zoellner '54 '15GP**

## PROGRAM SUPPORT

CLAIRE AND TED  
DIAMOND '37 '85H

MARC A.  
FALATO '87

W. BEALL  
FOWLER '59



THE LONG FAMILY  
ENDOWMENT FOR  
COMMUNITY OUTREACH  
IN THE ARTS



BRENDA & JOHN  
MCGLADE '76 '81G

POHANKA FAMILY  
FOUNDATION



THE PRESSER FOUNDATION

## MEDIA PARTNERS



## ADDITIONAL SUPPORT

Curtain Warmers: **The Arnan and Marlene Finkelstein Endowment Fund**

School Shows: **Richard H. Johnson '73G**

Music Initiatives: Supported in part by the

**Klees Family Instrumental Ensemble Endowed Fund**

Creative Campus Initiative: Supported in part by the

**Anne R. Kline '81 Endowed Fund for Creatively Integrated Programming**

Notations: **Lehigh University Creative Writing Program**

and **Zoellner Arts Center**

## SPECIAL ACKNOWLEDGMENTS



Zoellner Arts Center receives state arts funding support through a grant from the Pennsylvania Council on the Arts, a state agency funded by the Commonwealth of Pennsylvania.



THE COMMUNITY'S ONLY CHILDREN'S HOSPITAL

*Celebrating 10 years!*

From minor sniffles to specialty care,  
we've been your partner in pediatric  
health for over a decade.



**Lehigh Valley**  
**Reilly Children's Hospital**

Your health deserves a partner.



# TILLER

PRIVATE WEALTH

## ADVISORS *to* ACHIEVERS

Tiller Private Wealth is an independent wealth management firm, trusted by successful individuals, families, and business owners to enrich and enhance their financial achievements.

### DELIVERING A UNIQUELY PERSONAL AND INTEGRATED EXPERIENCE

We are the go-to firm for all things financial – keeping clients on track and giving them the sense of calm and comfort to focus on their true interests.

**TILLER PRIVATE WEALTH** (formerly Youngs Advisory Group)  
Offices in Lehigh Valley, Pennsylvania & Orlando, Florida  
610-954-9940 | [www.TillerPW.com](http://www.TillerPW.com)

An Independent  
Registered Investment  
Advisory Firm

ENTHUSIASTIC SUPPORTERS OF THE ZOELLNER ARTS CENTER



**Comfort™  
SUITES**

by CHOICE HOTELS

Behind every  
great day is a  
great night.



At Comfort Suites® we work hard to help you feel refreshed, so you can be ready to take on your day.

- Wake up refreshed thanks to premium bedding with soft and firm pillows.
- Fuel your day with hearty and healthy breakfast choices.
- Stay connected with fast & free Wi-Fi.

**Comfort Suites Bethlehem Near  
Lehigh University and LVI Airport**

120 W. Third St.  
Bethlehem, PA 18015  
610.882.9700

Book your room  
with us today at  
**ComfortSuites.com**



# THE POWER TO MAKE A DIFFERENCE

PPL people have a personal commitment to excellence in all that we do, whether it's keeping the lights on, coaching a youth sports team or volunteering at a local school. We're proud of the positive difference we make in people's lives.

PPLWEB.COM

# WDIY 88.1

LEHIGH VALLEY PUBLIC RADIO **n p r**

Listen to WDIY on your phone with our new app



Enjoy live broadcasts and browse our digital archive wherever you go

NPR News  
Public Affairs  
A Diverse Mix of Music





# Lights, Camera, *Engage*

**WITNESS THE POWER  
OF VIDEO MARKETING**  
with expertly crafted  
productions. Boost  
engagement and leave  
a lasting impression on  
your audience.

[www.asrmediaproductions.com](http://www.asrmediaproductions.com)



2023 | 2024

AVA  
ACADEMY OF  
VOCAL ARTS

opera  
season



GIOACHINO ROSSINI (1792-1868)

# Il barbiere di Siviglia

MAY 12

Sun | 4:00pm  
Baker Hall

**ZOELLNER**  
**ARTS CENTER**  
LEHIGH UNIVERSITY



2023.2024  
SEASON

Zoellner Arts Center receives state arts funding support through a grant from the Pennsylvania Council on the Arts, a state agency funded by the Commonwealth of Pennsylvania.



# AVA

ACADEMY OF  
VOCAL ARTS

**GIOACHINO ROSSINI (1792-1868)**

# Il barbiere di Siviglia

**Richard Raub, Conductor**

**Jeffrey Buchman, Stage Director**

This production is generously sponsored by  
Victoria Eckert Zoellner

The Young Professionals performance is  
generously sponsored by Charlotte H. Watts

---

**Scott Guzielek**

President and Artistic Director

**Christofer Macatsoris**

Jeannine B. Cowles Music Director Chair

# CAST

*Opera in two acts*  
*Libretto by Cesare Sterbini*

In order of vocal appearance

**APR 25, 30 | MAY 4, 12**

**APR 27 | MAY 2, 7**

**Fiorello**

Geoffrey Schmelzter

**Count Almaviva**

Angel Raii Gomez

Matthew Goodheart

**Figaro**

Kevin Godínez

Benjamin Dickerson

**Dr. Bartolo**

Yue Wu

Nan Wang

**Rosina**

Ethel Trujillo

Loella Grahn

**Don Basilio**

Dylan Gregg

Cumhur Görgün

**Berta**

Veronica Richer

Ariana Maubach

**Ambrogio**

Ariana Maubach

Veronica Richer

**Officer**

Shawn Roth

**Notary**

Luke Norvell

## CHORUS

Tenors: Joshua Berg, Luke Norvell, Shawn Roth

Baritones: Geoffrey Schmelzter

Bass-Baritones: Cumhur Görgün, Dylan Gregg

# SYNOPSIS

## ACT I

Scene 1. *The square in front of Dr. Bartolo's house.*

A poor student named Lindoro serenades the window of Rosina, to no avail. He is really the young Count Almaviva in disguise, and he hopes to make Rosina love him for himself and not his money. Figaro, a barber who knows all the town's secrets and scandals, explains to Almaviva that Rosina is Bartolo's ward, not his daughter, and the doctor intends to marry her. Figaro devises a plan: the Count will disguise himself as a drunken soldier with orders to be billeted with Bartolo so that he may gain access to Rosina. For his aid, Figaro is to be richly rewarded.

Scene 2. *A room in the house of Dr. Bartolo.*

Rosina reflects on the voice that has enchanted her and resolves to use her considerable wiles to meet the man it belongs to—a poor student named Lindoro, as the Count has led her to believe. Bartolo appears with Rosina's music master, Don Basilio. Basilio warns Bartolo that Count Almaviva, who has made known his admiration for Rosina, has been seen in Seville. Bartolo decides to marry Rosina immediately. Basilio suggests slander as the most effective means of getting rid of the Count. Figaro, who has overheard the plot, warns Rosina and promises to deliver a note from her to Lindoro. Bartolo suspects that Rosina has indeed written a letter, but she outwits him at every turn. Bartolo warns her not to trifle with him.

The Count arrives, creating a ruckus in his disguise as a drunken soldier, and secretly passes Rosina his own note. Bartolo is infuriated by the stranger's behavior and noisily claims that he has an official exemption from billeting soldiers. Figaro announces that a crowd has gathered in the street, curious about the argument they hear coming from inside the house. The civil guard bursts in to arrest the Count, but when he secretly reveals his identity to the captain he is instantly released. Everyone, except Figaro, is amazed by this turn of events.

## INTERMISSION

# SYNOPSIS

## ACT II

Scene 1. *The music room of Dr. Bartolo's house.*

Bartolo suspects that the “soldier” was a spy planted by Count Almaviva. The Count returns, this time disguised as Don Alonso, a music teacher and student of Don Basilio. He has come to give Rosina her singing lesson in place of Basilio, who, he says, is ill at home. Don Alonso then tells Bartolo that when visiting the Count at his inn, he found a letter from Rosina. He offers to tell her that it was given to him by another woman, seemingly to prove that Lindoro is toying with Rosina on the Count's behalf. This convinces Bartolo that Don Alonso is indeed a student of the scheming Basilio, and he allows him to give Rosina her lesson. With Bartolo dozing off, the Count and Rosina declare their love.

Figaro arrives to give Bartolo his shave and manages to snatch the key that opens the doors to Rosina's balcony. Suddenly Basilio shows up looking perfectly healthy. The Count, Rosina, and Figaro convince him with a quick bribe that he is in fact ill and must go home at once. While Bartolo gets his shave, the Count plots with Rosina to meet at her balcony that night so that they can elope. The doctor overhears them and realizing he has been tricked again, flies into a rage. Everyone disperses. The maid Berta comments on the crazy household. Bartolo summons Basilio, telling him to bring a notary so Bartolo can marry Rosina that very night. Bartolo then shows Rosina her letter to Lindoro, as proof that he is in league with Count Almaviva. Heartbroken and convinced that she has been deceived, Rosina agrees to marry Bartolo. A thunderstorm passes.

Scene 2. *Rosina's room. Dr. Bartolo's house.*

Figaro and the Count climb a ladder to Rosina's balcony and let themselves in with the key. Rosina appears and confronts Lindoro, who finally reveals his true identity as Count Almaviva. Basilio shows up with the notary. Bribed and threatened, he agrees to be a witness to the marriage of Rosina and Count Almaviva. Bartolo arrives with soldiers, but it is too late. He accepts that he has been beaten, and Figaro, Rosina, and the Count celebrate their good fortune.

# ORCHESTRA

## **Violín 1**

Igor Szweg, concertmaster

Donna Grantham

Luigi Mazzocchi

Joseph Kauffman

Alexandra Cutler-Fetkewicz

Yoori Kim Williams

## **Violín II**

Elizabeth Kaderabek

Russell Kotcher

Gregory Teperman

Kate Suk

Mary Loftus

## **Viola**

Yoshihiko Nakano

Julia DiGaetani

Scott Wagner

## **Cello**

Vivian Barton Dozor

Lynne Beiler

## **Bass**

Anne Peterson

Stephen Groat

## **Guitar**

Shawn Roth

## **Flute**

Edward Schultz

## **Flute / Piccolo**

Kim Trolier

## **Oboe**

Geoffrey Deemer

## **Clarinet**

Joseph Smith

Allison Herz

## **Bassoon**

Zachary Feingold

Maria Buonviri

## **French Horn**

Karen Schubert

Ryan Stewart

## **Trumpet**

Brian Kuszyk

Thomas Cook

## **Timpani**

Martha Hitchins

## **Harpsichord**

Richard Raub

## **RICHARD A. RAUB**

### **MUSICAL DIRECTOR, PIANIST AND CONDUCTOR**



For 40 years, Mr. Raub has called Philadelphia and AVA, home. His pianistic skills and musical intuition coupled with guidance, teaching and collaboration with some of the world's greatest artists, spanning several operatic generations, such as Birgit Nilsson, Sherrill Milnes, Renata Scotto, Luciano Pavarotti, Aprile Millo, Jerry Hadley, Denyce Graves, Stuart Neill, Angela Meade, Latonia Moore, Ailyn Pérez and Joyce DiDonato, have helped shape his musical vista.

In addition to working with many Philadelphia musical organizations, as well as music festivals in the U.S. and Canada, he has been the official pianist for the Metropolitan Opera Philadelphia District Auditions for 35 years and Regional Auditions at The Kennedy Center for 10.

For 30 years, he has played for The Voice Foundation, the world's oldest and leading organization dedicated to voice research, medicine, science, and education. Their master classes and galas have included the singing scientists, as well as famous guest artists. Mr. Raub was honored to receive a surprise V.E.R.A. Award in recognition of his contribution to the field of vocal communication in 2010.

As conductor, he participated in AVA's *A Celebration of Opera!* in November 2021, Donizetti's *La favorite* in 2020, and the world-premiere of Margaret Garwood's *The Scarlet Letter* at The Merriam Theatre in 2010. Critic Michael Caruso has written, "Raub's conducting highlighted the specific beauty and overarching structure of Rossini's stunning score. He elicited sterling playing from the AVA Opera Theatre Orchestra and scintillating singing from his cast."

# JEFFREY BUCHMAN

## DIRECTOR



*Opera News* calls Director Jeffrey Buchman “a formidable talent.” Constantly pushing the limits of the performing arts, Mr. Buchman’s versatility leads him to a variety of venues to explore some of opera’s classics while also producing and premiering new works. His innovation puts him at the forefront of a new era in directing. Together with renowned conductor Gerard Schwarz, he recently created a televised production of Mussorgsky’s *Pictures at an Exhibition* which is scheduled to be aired on over 225 PBS stations nationwide.

In addition to directing this season’s production of *Il Barbiere di Siviglia*, his previous productions for the Academy of Vocal Arts have included *La bohème*, *La traviata*, *Don Giovanni*, *Roméo et Juliette* and *Die Zauberflöte*. A favorite with Florida Grand Opera, he has directed their productions of André Previn’s *A Streetcar Named Desire*, Handel’s *Agrippina*, *La bohème*, *Die Zauberflöte*, *Rigoletto*, *Tosca*, *Pagliacci*, *Eugene Onegin*, Jake Heggie’s *Three Decembers*, Daron Hagen’s *New York Stories*, and a double bill of Bernstein’s *Trouble in Tahiti* & Pasatieri’s *Signor Deluso*.

Recent productions have also included *Carmen* for Atlanta Opera, Opera Carolina, Toledo Opera; *As One* for Opera Colorado and Hawaii Opera Theater; Ricky Ian Gordon’s *27* for Michigan Opera Theatre; *Il barbiere di Siviglia* for Lyric Opera Baltimore and the Orlando Philharmonic, *Tosca* for Opera Tampa; *Il Trovatore* for Toledo Opera; *La tragédie de Carmen* and *Il barbiere di Siviglia* for Syracuse Opera; *Turandot* and *Manon Lescaut* for Mobile Opera; a double-bill of *Gianni Schicchi/Suor Angelica*, *Roméo et Juliette* and *La fille du régiment* at Intermountain Opera Bozeman; *Die Zauberflöte* and *Così fan tutte* at Brevard Music Center; *Rigoletto* and *South Pacific* for Anchorage Opera; *Hänsel und Gretel* for Sarasota Opera; *Cold Sassy Tree* for the Sugar Creek Music Festival; *L’elisir d’amore* for Toledo Opera; *La Cenerentola* at Green Mountain Opera Festival; and the world premiere of *TESLA* for the SoBe Arts Festival. He also created the world-premiere of Michael Dellaira’s new opera *The Leopard* with Maestro Gerard Schwarz conducting. With Opera Naples he has directed productions of *La traviata*, *La bohème*, *Carmen*, *Die Zauberflöte*, *Le nozze di Figaro*, *Madama Butterfly*, *Faust*, *Turandot*, *Don Pasquale*, and *Il trovatore*.

Mr. Buchman has a long history of fostering the artistic growth of young artists throughout the country, including directing for the Young Artist Programs at Seattle Opera, Tulsa Opera, Sarasota Opera, Brevard Music Festival, Florida Grand Opera, Cincinnati College-Conservatory of Music Opera Bootcamp, Tokyo International Vocal Arts Academy, Brancaleoni International Music Festival, and the Herb Alpert School of Music at UCLA. He has also created productions of Osvaldo Golijov’s *Ainadamar*, *Carmen*, *La bohème* and *La Traviata* for Indiana University’s Jacobs School of Music in recent years.



# RESIDENT ARTISTS

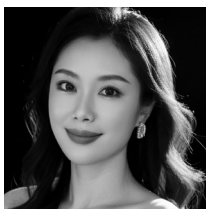


**Joshua Berg, tenor – 1<sup>st</sup> Year Resident Artist**

Gladstone, New Jersey  
Rice University (BM)

*Recent:* Hervey in *Anna Bolena* (The Academy of Vocal Arts), Abraham Kaplan in *Street Scene* (Rice University). Bardolfo in *Falstaff* (Aspen Opera Theater), Soldat in *Der Kaiser von Atlantis* (Rice University).

*Awards:* Atkinson Memorial Scholarship Award (Rice University - Shepherd School of Music), National YoungArts Foundation (Winner), Paul Guido and Steve Blain Scholarship Award (Music Academy of the West).



**Manli Deng, soprano – 1<sup>st</sup> Year Resident Artist**

Chongqing, China  
John Hopkins University Peabody Conservatory (MM), Central Conservatory of Music, China (BM)

*Recent:* Anna in *Anna Bolena* (The Academy of Vocal Arts), Mimi in *La bohème* (Rutgers University), Huniu in *Rickshaw Boy* (China Now Festival), Dama di Lady Macbeth in *Macbeth* (Maryland Lyric Opera), Helene in *Hin und Zurück* and Fiordiligi in *Così fan tutte* (Peabody Opera Theater).

*Awards:* The Sylvia Green Voice Competition (3rd Prize), The Metropolitan Opera National Council Upper Midwest Region (Finalist), MONC Atlantic Region (Finalist), MONC Philadelphia District (Encouragement Award), The Cossotto International Vocal Competition (Special Award), The Gut Immling International Vocal Music Competition (3rd Prize).

# RESIDENT ARTISTS



**Benjamin Dickerson, *baritone* – 4<sup>th</sup> Year Resident Artist**

Burlington, Vermont  
Manhattan School of Music (BM)

*Recent:* Tarquinius in *The Rape of Lucretia* (The Academy of Vocal Arts), Don Giovanni in *Don Giovanni*, Germont in *La traviata* and Onegin in *Eugene Onegin* (AVA), MAN in *The Extinctionist* (Heart-beat Opera), Albert in *Werther* (Florida Grand Opera).

*Awards:* Jensen Awards (Finalist), Loren L. Zachary Awards (4th Place), Giargiari Bel Canto Competition (2nd Place), Joan Taub Ades Vocal Competition (1st Place), Marilyn Horne Song Competition (1st Place).



**Jenny Anne Flory, *mezzo-soprano* – 2<sup>nd</sup> Year Resident Artist-**

Dayton, Virginia  
University of Maryland Opera Studio (MM), James Madison University (BM)

*Recent:* Lucretia in *The Rape of Lucretia* (The Academy of Vocal Arts), Giovanna Seymour in *Anna Bolena* and Zerlina in *Don Giovanni* (AVA), Siebel in *Faust* (Detroit Opera), Romeo in *I Capuleti e i Montecchi* (Palm Beach Opera).

*Awards:* American Institute of Musical Studies, Meistersinger Competition (4th Place), The Metropolitan Opera Laffont Competition, North Carolina District (Winner).



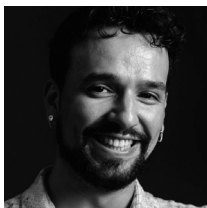
**Monique Galvão, *mezzo-soprano* – 4<sup>th</sup> Year Resident Artist**

Rio de Janeiro, Brazil  
Florida International University (BA), Miami Dade College (AA)

*Recent:* Giovanna Seymour in *Anna Bolena* (The Academy of Vocal Arts), Carmen in *La Tragédie de Carmen* (Chautauqua Opera), Donna Elvira in *Don Giovanni* and Flora in *La traviata* (The Academy of Vocal Arts), Carmen in *Carmen* (Miami Music Festival).

*Awards:* Loren L. Zachary National Competition (Semifinalist), Linus Lerner International Singing Competition (Second place), Maria Callas Competition (Semifinalist), NATS Category Winner.

# RESIDENT ARTISTS



**Kevin Godínez, *baritone* – 4<sup>th</sup> Year Resident Artist**

Alajuela, Costa Rica  
University of Costa Rica (BM)

*Recent:* Tarquinius in *The Rape of Lucretia* (The Academy of Vocal Arts), Ford in *Falstaff* (Knoxville Opera), Young Artist (Merola Opera Program, San Francisco Opera); Giovanni (cover) *Don Giovanni* (AVA), Conte d'Almaviva in *Le nozze di Figaro* (Annapolis Opera); Dottore Malatesta *Don Pasquale* (AVA).

*Awards:* Career Bridges (Grant Winner), Cooper-Bing Competition (Third Prize and Audience Prize), Metropolitan Opera Laffont Competition, Pittsburgh and Tennessee District (Winner), The Gerda Lissner Foundation, Zarzuela Division (Second Prize); The Giargiari Bel Canto Competition (Second Prize), Linus Lerner International Voice Competition (Third Prize).

*Upcoming:* Bass Soloist, *Vesperae solennes de confessore*, National Symphonic Orchestra of Costa Rica; Masetto in *Don Giovanni* (Opera Philadelphia).



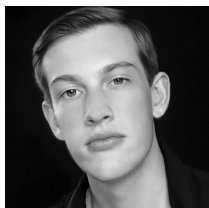
**Angel Raii Gomez, *tenor* – 3<sup>rd</sup> Year Resident Artist**

McAllen, Texas  
University of Texas Rio Grande Valley

*Recent:* Percy in *Anna Bolena*, Don Ottavio in *Don Giovanni*, Ernesto in *Don Pasquale* and Gastone in *La traviata* (The Academy of Vocal Arts).

*Awards:* American Institute of Musical Studies, Meistersinger Competition (1st Place), The Metropolitan Opera Laffont Competition, New Orleans District (Encouragement Award), Giargiari Bel Canto Competition (Audience Favorite).

# RESIDENT ARTISTS



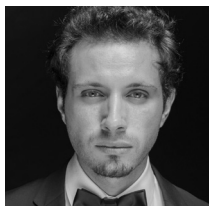
**Matthew Goodheart, tenor – 2<sup>nd</sup> Year Resident Artist**

Binghamton, New York  
Cincinnati College-Conservatory of Music (BM)

*Recent:* Riccardo Percy in *Anna Bolena* (Academy of Vocal Arts), Ruben Iglesias in *Bel Canto* (Aspen Opera Theater and Vocal Arts), Alfredo in *La traviata* (The Academy of Vocal Arts), Tamino in *Die Zauberflöte* (Cincinnati College-Conservatory of Music).

*Awards:* Opera Index Encouragement Award, Mario Lanza Competition (3<sup>rd</sup> Prize)

*Upcoming:* Deacon 3/Young Aide in *The Righteous* (Santa Fe Opera)

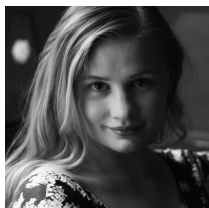


**Cumhur Görgün, bass – 2<sup>nd</sup> Year Resident Artist**

Istanbul, Türkiye  
Istanbul University State Conservatory (MM)

*Recent:* Collatinus in *The Rape of Lucretia*, Enrico VIII in *Anna Bolena*, Leporello in *Don Giovanni*, Don Pasquale in *Don Pasquale* and Marchese d' Obigny in *La traviata* (The Academy of Vocal Arts), Schlendrian in *Kaffeekantate* (Süreyya Opera House), Antonio in *Le nozze di Figaro* (Wiener Konzerthaus).

*Awards:* Mario Lanza Competition (2<sup>nd</sup> Place), Meistersinger Competition (5<sup>th</sup> Prize), National Soloist Competition (Edward Berkeley Award), National Soloist Competition (Special Award).



**Loella Grahn, soprano – 4<sup>th</sup> Year Resident Artist**

Köping, Sweden  
Operastudion Kapellsberg

*Recent:* Lucia in *The Rape of Lucretia* and Norina in *Don Pasquale* (The Academy of Vocal Arts), Soprano Soloist in Haydn's *The Creation* (Philadelphia Sinfonia), Musetta in *La bohème* (AVA).

*Awards:* Camille Coloratura Awards (Semi-Finalist).

# RESIDENT ARTISTS



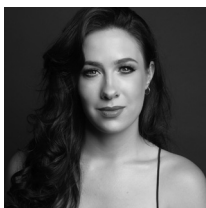
**Dylan Gregg, *bass-baritone* – 2<sup>nd</sup> Year Resident Artist**

Salisbury, Maryland

Rice University (MM), Boston University (BM)

*Recent:* Collatinus in *The Rape of Lucretia* and Enrico VIII in *Anna Bolena* (The Academy of Vocal Arts), Jailer in *Tosca* (Santa Fe Opera), Leporello in *Don Giovanni*, Don Pasquale in *Don Pasquale* (The Academy of Vocal Arts), Dottore Grenvil in *La traviata*, Cuno in *Der freischütz* and Elder Ott in *Susannah* (Wolf Trap Opera).

*Awards:* The Metropolitan Opera Laffont Competition (Encouragement Award).



**Lydia Grindatto, *soprano* – 3<sup>rd</sup> Year Resident Artist**

Tijeras, New Mexico

University of New Mexico (BM)

*Recent:* Tatyana in *Eugene Onegin* (Opera Columbus), Anna Bolena in *Anna Bolena* (The Academy of Vocal Arts), Second Sprite/Rusalka Cover in *Rusalka* (Santa Fe Opera) Donna Anna in *Don Giovanni* (The Academy of Vocal Arts) Violetta in *La traviata* and Tatyana in *Eugene Onegin* (AVA).

*Awards:* The Metropolitan Opera Laffont Competition (2024 Grand Finals Winner), Opera Index (Winner), The Loren L. Zachary Society Competition (5th place), The Gerda Lissner Foundation International Vocal Competition (Grant Winner), The Giargiari Bel Canto Competition (1st Place).

*Upcoming:* Donna Anna in *Don Giovanni* (Arizona Opera and Merola Opera).

# RESIDENT ARTISTS



**Emily Margevich, *soprano* – 5<sup>th</sup> Year Resident Artist**

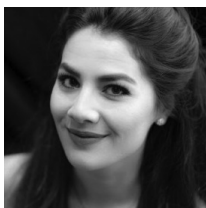
Chicago, Illinois

DePaul University (MM and BM)

*Recent:* Tatyana in Eugene Onegin (Opera Baltimore and Heart-beat Opera), Female Chorus in *The Rape of Lucretia* (The Academy of Vocal Arts), Donna Elvira in *Don Giovanni*, Violetta in *La traviata*, Musetta in *La bohème* (AVA), Suor Angelica in *Suor Angelica*, (Opera Festival of Morelia), Juliette in *Roméo et Juliette* (Janiec Opera Company).

*Awards:* The Metropolitan Opera Laffont Competition, Kansas City District (1<sup>st</sup> Place), Meistersinger Competition, Austria (3<sup>rd</sup> Place), American Institute of Musical Studies, Meistersinger Competition (3<sup>rd</sup> Place), The Jensen Foundation Vocal Competition (2<sup>nd</sup> Place), The Metropolitan Opera National Council Auditions, Central Region (3<sup>rd</sup> Place), The Metropolitan Opera National Council Auditions, Illinois District (1<sup>st</sup> Place).

*Upcoming:* Young Artist at Music Academy of the West



**Ariana Maubach, *mezzo-soprano* – 1<sup>st</sup> Year Resident Artist**

Toronto, Canada

University of Cincinnati College Conservatory of Music (MM), Eastman School of Music (BM).

*Recent:* Bianca in *The Rape of Lucretia* and Smeton in *Anna Bolena* (The Academy of Vocal Arts), Linette in *The Love for Three Oranges* (Des Moines Metro Opera), Mère Marie in *Dialogues des Carmélites* (Cincinnati Conservatory of Music), Filippjevna (cover) in *Eugene Onegin* (Music Academy of the West), Dorothée in *L'amant anonyme* (CCM).

*Awards:* Isabella Dorothy Webb Grant (Glenn Gould School), Graduate Incentive Award Full Tuition Scholarship (University of Cincinnati College Conservatory of Music), Howard Hanson Merit Scholarship (Eastman School of Music).

# RESIDENT ARTISTS



**Luke Norvell, tenor – 3<sup>rd</sup> Year Resident Artist**

Tacoma, Washington  
The Master's University (BM)

*Recent:* The Male Chorus in *The Rape of Lucretia* (The Academy of Vocal Arts), Rodolfo in *La bohème* (Music Academy), Werther in *Werther* (Act 3), Afternoons at AVA (Opera Philadelphia), Anatol (cover) in *Vanessa* (Spoleto Festival USA), Alfredo in *La traviata* and Lensky in *Eugene Onegin* (The Academy of Vocal Arts and Music Academy).

*Awards:* Vincerò World Singing Competition (Grand Finalist), Opera Index Vocal Competition (Emerging Artist Award), Giargiari Bel Canto Competition (2nd Place), The Metropolitan Opera Laffont Competition, South Carolina District (Winner) and Southeast Region (Encouragement Award).

*Upcoming:* Rinuccio in *Gianni Schicchi* and *Buoso's Ghost* (Utah Festival Opera).



**Veronica Richer, soprano – 1<sup>st</sup> Year Resident Artist**

Bryan, Ohio  
Mannes School of Music (MM), Boston Conservatory (BM)

*Recent:* The Female Chorus in *The Rape of Lucretia* (The Academy of Vocal Arts), Angelica in *Suor Angelica* and Nella in *Gianni Schicchi* (Bay View Music Festival), Rusalka in *Rusalka* (LAH-SOW), Angelica in *Suor Angelica* (International Summer Opera Festival of Morelia).

*Awards:* The Metropolitan Opera Laffont Competition, Connecticut District (Encouragement Award).

# RESIDENT ARTISTS

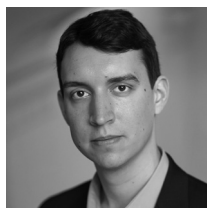


## **Shawn Roth, tenor – 4<sup>th</sup> Year Resident Artist**

Johnstown, Pennsylvania  
Oberlin Conservatory (BM)

*Recent:* The Male Chorus in *The Rape of Lucretia*, Hervey in *Anna Bolena*, and Don Ottavio in *Don Giovanni* (The Academy of Vocal Arts). Bacchus in *Ariadne auf Naxos* (Mousaverse Opera), Mr. Upfold in *Albert Herring* (The Princeton Festival), Don José in *La tragédie de Carmen* (Velaa Island Opera).

*Awards:* The Metropolitan Opera Laffont Competition, Pittsburgh District (Winner), The Houston Grand Opera Eleanor McCollum Competition (Semifinalist), The Meistersinger Competition (Honorable Mention), The Marilyn Horne Song Competition (Winner), The Metropolitan Opera Laffont Competition Great Lakes Region (Encouragement Award), MONC Michigan District (Winner).



## **Geoffrey Schmelzer, baritone – 1<sup>st</sup> Year Resident Artist**

Skokie, Illinois  
Northwestern University (MM), University of Illinois at Urbana-Champaign (BM)

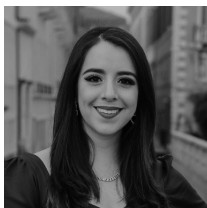
*Recent:* Junius in *The Rape of Lucretia* (The Academy of Vocal Arts) and Grégorio in *Roméo et Juliette* (Central City Opera), Guglielmo in *Così fan tutte* (Finger Lakes Opera), Schaubard in *La bohème* and Mr. Gobineau in *The Medium* (Northwestern Opera Theater).

*Awards:* Metropolitan Opera Laffont Competition, Iowa District (Encouragement Award), Northwestern University 2023 Concerto Competition Winner, Central City Opera Cady Young Artist Award, Casa Italia Chicago Muccianti Scholarship Award.

*Upcoming:* Mr. Greatorex/George Gissing/Etcher/Witness #6 in *Elizabeth Cree* (The Glimmerglass Festival), Major-General Stanley (cover) in *The Pirates of Penzance* (The Glimmerglass Festival).



# RESIDENT ARTISTS



**Ethel Trujillo, soprano – 4<sup>th</sup> Year Resident Artist**

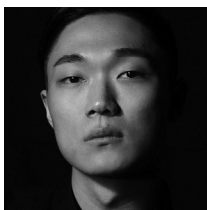
Puebla, Mexico

Benemérita Universidad Autónoma de Puebla (BM)

*Recent:* Lucia in *The Rape of Lucretia* (The Academy of Vocal Arts) and Micaëla in *Carmen* (St. Barts Music Festival). Juliette (cover) in *Roméo et Juliette* (The Glimmerglass Festival), Zerlina in *Don Giovanni* and Norina in *Don Pasquale* (AVA).

*Awards:* The Metropolitan Opera Laffont Competition (New York District Winner), Opera Index Vocal Competition (Emerging Artist Award), The Giargiari Bel Canto Competition (3rd Place),

The Metropolitan Opera Laffont Competition (Encouragement Award), Annapolis Opera Competition (Encouragement Award), Shreveport Opera Competition (Encouragement Award), The Gerda Lissner Foundation International Vocal Competition, Operetta and Zarzuela (1st Place).



**Nan Wang, bass-baritone – 1<sup>st</sup> Year Resident Artist**

Handan, Hebei, China

Manhattan School of Music (MM), Central Conservatory of Music, China (BM)

*Recent:* Junius in *The Rape of Lucretia* and Lord Rochefort in *Anna Bolena* (The Academy of Vocal Arts), Colline in *La bohème* and Count Capulet (Cover) in *Roméo et Juliette* (The Glimmerglass Festival), Harašta in *The Cunning Little Vixen* and Des Grieux in *Le Portrait de Manon* (Manhattan School of Music), Masetto and Leporello (cover) in *Don Giovanni* (Chautauqua Opera Conservatory), Bartolo in *Le nozze di Figaro* (Manhattan School of Music).

*Awards:* The Metropolitan Opera Laffont Competition, New England Region (Encouragement Award), The Stan Sesser Award in Voice at Manhattan School of Music.

# RESIDENT ARTISTS



**Yue Wu, *bass-baritone* – 2<sup>nd</sup> Year Resident Artist**

Tianjin, China

Mannes School of Music (MM), Tianjin Conservatory of Music (BM)

*Recent:* Lord Rochefort in *Anna Bolena* (The Academy of Vocal Arts). Katsumi Hosokawa in *Bel Canto* and La Voce in *Idomeneo* (Aspen Opera Theater and VocalARTS), Masetto in *Don Giovanni* and Dottore Grenvil in *La traviata* (The Academy of Vocal Arts) Rotnyi in *Eugene Onegin* (Music Academy of the West), Charlie Soong in *Dr Sun-Yat Sen* (Mannes School of Music).

*Awards:* The Gerda Lissner Foundation International Vocal Competition (Encouragement Award), The Metropolitan Opera Laffont Competition Michigan District (Encouragement Award), Opera at Florham International Vocal Competition (5<sup>th</sup> Place).

*Upcoming:* Figaro (Cover) in *Le nozze di Figaro* (Aspen Opera Theater and VocalARTS)



**Alla Yarosh, *mezzo-soprano* – 2<sup>nd</sup> Year Resident Artist**

Tal'ne, Ukraine

Queensland Conservatorium Griffith University (BM)

*Recent:* Lucretia in *The Rape of Lucretia* and Smeton in *Anna Bolena* and Annina in *La traviata* (The Academy of Vocal Arts), The Queen of Fairies in *Iolanthe* and Hippolyta in *A Midsummer Night's Dream* (Queensland Conservatorium), Olga Olsen in *Street Scene* and Ursule in *Beatrice et Benedict* (Queensland Conservatorium).

*Awards:* The Royal Melbourne Philharmonic Oratorio Aria (2<sup>nd</sup> Place), Elizabeth Muir Postgraduate Prize (Queensland Conservatorium), John and Sue Thompson Vocal Accompaniment Prize in collaboration with Samuel Choi (Queensland Conservatorium), Linda Edith Allen Award (Queensland Conservatorium), Jim Massie Memorial Prize at the Brisbane Club.

# ACADEMY OF VOCAL ARTS



Founded in 1934 by Helen Corning Warden and headquartered in Philadelphia, PA, the Academy of Vocal Arts (AVA) is dedicated to giving voice to opera's future. Regarded by many as the premier post-graduate opera training school in the world, AVA provides four years of tuition-free training. It is dedicated exclusively to the study of voice. The student body is intentionally small and admission is highly competitive. More than 200 singers from across the globe audition each year for the fewer than eight spots available in each class. The

program is limited to fewer than 30 total Resident Artists, who are immersed in a uniquely intensive and highly personalized program where they learn from world-renowned faculty. They receive training in voice, vocal repertoire, acting, stage combat, opera history, several languages, and each year are presented in fully-staged opera productions accompanied by the professional AVA Opera Orchestra. They are cast in leading roles that they will in all likelihood continue to perform for the rest of their careers.

No other opera training program in the world rivals AVA's success in developing individual artists whose extraordinary voices inspire millions on international stages. AVA alumni have received five of the past eight Richard Tucker Awards and five of the eleven Beverly Sills Artist Awards presented by The Metropolitan Opera. Over 90% of AVA alumni since 2000 continue active singing careers. AVA proudly counts among its alumni such distinguished international stars as Stephen Costello, Ellie Dehn, Joyce DiDonato, Joyce El-Khoury, Michael Fabiano, Nancy Fabiola Herrera, Bryan Hymel, Luis Ledesma, Angela Meade, Latonia Moore, James Morris, Corinne Winters, Stuart Neill, Ailyn Pérez, Ruth Ann Swenson, Taylor Stayton and Richard Troxell, and currently making their mark in the opera world, recent graduates Piotr Buszewski, Dominick Chenes, Scott Conner, Marina Costa-Jackson, André Courville, Othalie Graham, Alasdair Kent, Zachary Nelson, Musa Ngqungwana, Nicole Piccolomini, Vanessa Vasquez.

In recent years, AVA Resident Artists took Top or First prizes in many competitions, such as from the Belvedere Competition, Elizabeth Connell Competition, the Licia Albanese-Puccini Foundation, Giulio Gari Foundation International Vocal Competition, and the Loren L. Zachary Society. Since 2000, 12 AVA Resident Artists have been named National Winners in the Metropolitan Opera National Council Auditions.

# PRODUCTION BIOS

## **ROSA MERCEDES, choreographer/assistant to the director**

Born in Barcelona, Spain, Rosa Mercedes is an internationally acclaimed dancer and choreographer whose work The New York Times called “sexy and hypnotically precise”. Featured by dance companies, dance festivals and symphony orchestras throughout the United States and Europe, her extensive work in opera has been seen on the stages of companies such as The Metropolitan Opera, Teatro dell’Opera di Roma, Seattle Opera, Dallas Opera, Atlanta Opera, Washington National Opera, Michigan Opera Theatre, Opera Theatre of St. Louis, Cincinnati Opera, Opera Lyra Ottawa, Florentine Opera, Austin Lyric Opera, Florida Grand Opera, Tulsa Opera, Palm Beach Opera, Opera Carolina, Toledo Opera and many others.

Rosa has worked with notable stage directors such as Franco Zeffirelli, Tito Capobianco, Chris Alexander, Tomer Zvulun, Renata Scottò, Bernard Uzan, Jeffrey Marc Buchman, Sandra Bernhard, Peter Kazaras, Bliss Hebert and Michael Ehrman in a vast repertoire that includes such works as *Salome*, *Samson et Dalila*, *Aida*, *La traviata*, *Carmen*, *Die Zauberflöte*, *Faust*, *Rigoletto*, *Lucia di Lammermoor*, *Don Giovanni*, *Il barbiere di Siviglia*, *Turandot*, *Don Quichotte*, *Il trovatore*, *The Bartered Bride*, *La bohème*, *Così fan tutte*, *Hänsel und Gretel*, *Un ballo in maschera*, *The Merry Widow*, *La Gioconda*, *Die Fledermaus*, *L’incoronazione di Poppea*, and *Roméo et Juliette*.

In addition to her work as a choreographer, Ms. Mercedes has been invited to give master-classes and workshops of Movement for Singers with young artist programs, universities, and festivals around the world to help singers acquire an even better physical vocabulary and understanding of the body as an expressive tool, in any repertoire they sing. Her specialty is in roles that require the technique, flavor and beauty of Spanish dance and flamenco.

## **BECCA SMITH, stage manager**

Becca Smith is a Philly based theater and circus artist. She is happy to be returning to AVA! Select credits include - [Stage Management] *Anna Bolena* (Academy of Vocal Arts), *An American Dream* (Opera Idaho), *The Hook* (Spiegelworld), *Legally Blonde*, *Junie B. Jones the Musical*, *Miss Nelson is Missing* (Ocean City Theatre Company), *BABEL* (Theatre Exile), *A Midsummer Night’s Dream* (Temple University), [Directing] *A Piece of My Heart*, *Just Right!* (Temple Theaters Side Stage), *Little Shop of Horrors* (South Philadelphia High School), [Acting] *As I Was, Not As I Am* (Moxie Arts Incubator Program), *The Exception and the Rule* (Penn Theatre Arts), *Genie’s Secret Bazaar* (Fever Productions).

## **PETER HARRISON, set designer**

Set designer Peter Harrison has designed sets for AVA since 1989. He has also designed for Connecticut Opera, Kentucky Opera, Cleveland Orchestra, Blossom Festival Opera, Skylight Opera, American Music Theatre Festival, Opera Theatre of Rochester (NY), and The Julliard School. Additional credits include *Orfeo* and *Bluebeard* with Christopher Alden for Long Beach Opera, and *Mambo* for HBO.

# PRODUCTION BIOS

## **ALLEN G. DOAK, JR., technical director/lighting design**

Lighting designer Allen G. Doak, Jr. heads his own set construction company, Midnight Productions, and does a great deal of freelance work in lighting and set design throughout the Delaware Valley. He has worked with the Bucks County Playhouse, the Pocono Playhouse, and the Falmouth, Massachusetts Playhouse, and has designed scenery for *Sweeney Todd*, *The Pirates of Penzance*, *The Best*

*Little Whorehouse in Texas*, *Brighton Beach Memoirs*, and *Amahl and the Night Visitors*.

Mr. Doak has produced *Jesus Christ Superstar*, *Murder Mystery Weekends*, and the special effects for the Haunted House in Newtown, PA.

## **VAL STARR, costume designer**

Val Starr joined The Academy of Vocal Arts as staff costume designer in 1977. Since joining the AVA production staff 46 years ago, Ms. Starr has costumed almost 200 productions, including world premieres of *The Scarlet Letter* and *Matteo Falcone*, the American premiere of Schubert's *Fierrabras*, and ten regional premieres. Val has also provided costuming services to the Lake George Opera Festival, The Boheme Opera Company, Yale University and Opera at Florham.

# PRODUCTION STAFF

Music Director – Richard Raub

Stage Director – Jeffrey Buchman

Choreographer/Assistant to the Director – Rosa Mercedes

Assistant Conductor/Chorus Master – Robert Kahn

Rehearsal Pianist – Elise Auerbach/Gabriel Rebolla

Musical Preparation - Danielle Orlando/Luke Housner/  
David Antony Lofton/Michael Lewis

Italian Diction - Ennio Brugnolo

Producer – Scott Guzielek

Set Designer – Peter Harrison

Lighting Designer/Set Construction – Allen J. Doak Jr.

Production Stage Manager – Becca Smith

Costume and Wig Design – Val Starr

Wigs – Kate Casalino

Make-Up – Natalie Kidd

Costumes – Costume Collection

Props – Janice Manser

House Manager – Kelly Rial

Box Office – Bill Buddendorf/Laura Avellino

Program Design – Leslie McGeoch

# AVA AND OUR RESIDENT ARTISTS WELCOME YOU TO TONIGHT'S PERFORMANCE

## ANTI-HARASSMENT POLICY

The Academy of Vocal Arts does not tolerate harassment of any kind on its campus or at any related event. This policy applies to AVA's faculty, staff, Resident Artists, volunteers, patrons and audience members. Any instance of harassment, be it physical, sexual, bullying or other inappropriate behavior, is to be reported immediately to a representative of the Academy of Vocal Arts.

## ETIQUETTE

We'd like to preface these rules of etiquette by assuring you that they are for the benefit of those people behind you. This may be their first venture into an opera, and they may actually welcome some pointers about how they can let you enjoy the music.

### **Applause:**

Learning when it is proper to applaud is often tricky. If nobody claps when the piece is over, it probably isn't. If you are not sure, take a cue from those around you. Shouting is generally acceptable only during applause. The word "shouted" is often the Italian word bravo or a variation (brava in the case of a female performer, bravi for a plural number of performers, bravissimo for a truly exceptional performance). The word's original meaning is "skillful" and it has come to mean "well done."

### **Electronic devices:**

Cell phones, watch alarms, pagers, cameras, and other electronic devices should be turned off prior to performances in the concert hall. These devices could cause a disturbance and are a distraction to musicians and other patrons.

### **Photography & Video:**

Photography and video capture by the audience is not allowed during the performances. It is a distraction to musicians and other patrons.

### **Noise:**

Even the quietest whispers can be heard in the concert hall and can prove to be a distraction to patrons and musicians alike. Save your comments until intermission or after the concert – it will give you and your friends much more to discuss. Thanks to the wonderful acoustics in today's concert halls, the sound of crumpling cellophane can be heard by everyone. Plan ahead, pop that hard candy in your mouth before the music starts.

FRIENDS OF  
**ZOELLNER**  
**ARTS CENTER**  
LEHIGH UNIVERSITY



The Board of Trustees of Lehigh University gratefully acknowledges and recognizes the following alumni, friends, corporations and foundations for their generosity in supporting the annual campaign for the Friends of Zoellner Arts Center:

**Leadership Funding:**

**Victoria E. and Robert E. Zoellner '54 '15GP**

**Overture \$25,000 - \$49,999**

Claire and Ted Diamond '37 '85H  
Lehigh Valley Health Network  
The Presser Foundation

**Bravo \$20,000 - \$24,999**

The Long Family Endowment for  
Community Outreach in the Arts  
Pennsylvania Council on the Arts  
Anne R. Kline '81 and Geoffrey P. Pohanka  
Viamedia\*

**Spotlight \$15,000 - \$19,999**

Air Products  
Lehigh Valley Community Foundation

**Marquee \$10,000 - \$14,999**

Astound Powered by RCN\*  
Marc Falato '87  
Andrea and Oldrich Foucek III '72 '05P '09P  
Brenda and John McGlade '76 '81G  
Mid Atlantic Arts Foundation  
PPL Electric Utilities  
Barbara and Harvey L. York '67 '94P '98P

**Ovation \$7,500 - \$9,999**

Richard H. Johnson '73G

**Producer \$5,000 - \$7,499**

Marlene and Arnan Finkelstein '58  
Just Born  
National Endowment for the Arts  
Pennsylvania Historical and Museum Commission  
Enid M. and Michael J. Seiden '63 '64

**Maestro \$2,500 - \$4,999**

Mary and Robert D. Culver, Jr. '66 '95P  
Diane and Robert C. Gerlach '70  
PA Humanities  
LuAnn and Richard W. Silberg '81 '82G  
Anne and Bob Teufel '59  
Anastasia M. '92 and William J. Tronoski '92  
WDIY\*

**Artist \$1,000 - \$2,499**

Steven and Rosalie Aaronson  
John E. and Charlotte M. Collier  
Janet L. and Byron D. Cook '74  
John L. Daniel '60 '61G '89P '19GP  
Nora A. and Mohamed S. El-Aasser 'F/S  
Rebecca Dabora and Joseph J. Helble '82 'F/S  
Marsha and Tom Hersh '72 '77G  
Barbara Moll '86P '21GP  
Judith and Stuart Olchick '60 '25GP  
Sally and Ray Reusser '67G  
James C. Rule, Jr. '11  
Stuart Portfolio Consultants, LP  
Wendy L. '83 '84G '08G and  
David Thomson '83 '84G '13P '18P

**Fellow \$500 - \$999**

John Alexander  
Jan Brody  
Christine Cook 'F/S  
Jan and James P. Creedon '83 '91G  
Mary T. and John Dodds  
Michelle V. and  
James J. Duane III '73 '04P '06P '06PG  
Beverly and Thomas Eighthy '23GP  
Lynne B. and Leon M. Harbold '59 '21GP  
Claudia A. Kostel '89  
Michele A. McGrath '96G  
Deborah Sacarakis 'F/S  
Roberta H. and  
James B. Swenson '59 '15GP '17GP 'F/S  
Nathaniel N. Urban 'F/S  
Larry A. Wehr '70 '70G

**Patron \$250 - \$499**

Terri A. '77G and  
James A. Bartholomew  
Joseph Clarken  
Joan Cole '95  
Roy and Judith Haase  
Ann C. '91G &  
Vincent G. Munley '74 '02P '04P '05P 'F/S  
Suzan R. and Martin H. Neidell '68  
Martin Q. Selzer '83  
Melody K. '81G and  
Richard N. Weisman '00P 'F/S

**Friend \$100 - \$249**

Janet L. '76 and Joel C. Bacon '75 '76G  
Marcia Moll Barone '86 '93G '21P 'F/S and  
Christopher J. Barone '86  
Pearl Anderson '96G and Paul Bashus '91G  
Michael R. Carbonetta '04  
Sue and Allan T. F. Cheung '73 '78G  
Joan and Bill Easterly  
Dr. Phyllis T. '85G and Dr. H. Ellis Finger  
Edward P. Foster '81G  
Dennis Gruver  
Emilie C. '81G and Pete Heesen  
Larry Heimbech  
Marie E. Helms '81  
James and Linda Henry  
Glen and Karen Hill  
Daniel J. Honoshowsky '96  
Michael J. Huertas '01  
Jewish Federation of the Lehigh Valley  
Deborah and Thomas Keller  
Roy M. Lehr '73G  
Lisa Mahon-Lesher and Martin W. Lesher '25P  
Christina Lewis  
Ellen Lewis 'F/S  
Daniel Lopresti 'F/S and Debbie Wesselmann  
John P. Lynch '85  
David A. Martin '80G

Tanya and D. John McAusland '88 '26P  
 Lynda J. and Mark A. Miller '81 '13P  
 Catherine and Ronald D. Mordosky  
 William F. Murphey '54  
 William H. Oldach III '84  
 Tracey L. Steele '27P and  
 Mark A. Patten '90 '27P  
 Mary Beth and Thomas Pavlo  
 James H. Pressler '69  
 Deborah Prince  
 Barbara and Michael Reiniger  
 Mary Jean A. Russo '88G '93G 'F/S  
 Dr. Dianne '82 and Dr. John Schellenberg  
 Lynne and Mark Shampain  
 Maryann R. Shegelski '98  
 Sharon L. Sibley-Weiss '92  
 Ayuko and Steven J. Siegel '16P  
 Glenn and Mary Simmons  
 John Stemler  
 Bradley Superka 'F/S  
 William E. Toth  
 Mark Wilson 'F/S  
 Jill B. and David A. Yannarell '83 '93G  
 John and Sandy Zengel

**Supporter < \$99**  
 Fred and Mandi D. Alford 'F/S  
 Sandra B. Anderson 'F/S  
 Mark Andrews  
 Jayson and Nurit Baron  
 Isabel M. Barone  
 Bryan Bennett  
 Dr. Elizabeth P. Butler and  
 Dr. Stephen J. Bennisson  
 Heather A. '07 and Nathan A. Bohler '07  
 Cheryl A. and Michael A. Cherry  
 Kara Coleman  
 Cindy L. '20P '23P and  
 Walter Conway '95G '20P '23P 'F/S  
 Cynthia Cressman  
 Hannah C. Cwienkala '18  
 Amy R. Heard and John W. Davison '25P  
 Connie Deckman  
 Linda Dicker '77G  
 Marcus F. Dilliard '77  
 Laura M. D'Orsi '87 '27P and  
 David F. Bauman '27P  
 Kimberly A. Drey '23P '25P 'F/S  
 Bruce J. Dunbar '78  
 Michael Edmonds  
 Coleen Finelli  
 Dr. Rebecca Miller and Dr. Robert Flowers 'F/S  
 Barrett E. Frankel '02 '03  
 Martha Franklin  
 Nancy Gorczyński  
 Maryann S. Gross '15G  
 Mary D. Hanisch  
 Martha Hatchett  
 Melissa L. Howard 'F/S  
 John E. Idenden, Jr. '69 '70  
 Reginald A. Jennings '70  
 Linda Johnson  
 Llewellyn B. Jones '63  
 Cynthia J. Kane 'F/S  
 Tyler R. Katz 'F/S  
 Matthew L. Kearns '78  
 Denise Kennedy  
 Shirley Khabbaz  
 Richard J. Kish 'F/S  
 Stanley F. Kobylarz '73

K. Michelle Kostem '68G  
 Deborah Andrus and Joshua Kovar 'F/S  
 Ricky LaDuca  
 John B. Larson '17  
 Kathryn and David M. Leber  
 Elizabeth L. Lemke '78  
 Christine M. Lesquier 'F/S  
 Jennifer Liu  
 Dennis Livrone  
 Adam M. Lupinacci '06  
 Alphonse and Martha Maffeo  
 Margaret McNamara  
 Kristen Mesa  
 Brian A. Miller '26P and  
 Ruth Elizabeth B. Miller '26P 'F/S  
 Edwena Miller  
 Stephanie Moffett  
 Lori A. Murphy '90  
 Loretta Nemchik  
 Mr. and Mrs. Nicholas Noel, III '74  
 Bethanne G. '87 and Patrick B. Nolan '87  
 Paul O'Grady  
 Richard Oppenheimer  
 Kathy Osmond  
 Debra A. Ott  
 Janine Palazzo  
 Todd Patterson 'F/S  
 Kristin C. Perry '93  
 Missy Petroski  
 Erin K. Pickett '24P  
 Ruth H. '79 and John Plucinski '11P  
 Catherine Y. Preysner '16  
 Jamie A. '92 and Michael Principe '25P  
 Ana C. Quiroz 'F/S  
 Robert Reiner  
 A. Mark Rentschler  
 Dale Roadcap  
 George Roesser  
 Wendy and Anthony J. Rotondo '91G  
 Michele L. and Rex R. Schultz '91  
 Kimberly A. Sretchen  
 Michael K. Scroggs 'F/S  
 Gary W. Simmons 'F/S  
 Brenda K. Smith-Booth '74  
 Zaharo C. Staurinos 'F/S  
 Kelly B. 'F/S and Andrew L. Stazi  
 Gretchen M. Vasquez 'F/S  
 Judith O. Pennington and  
 Steven H. Weintraub 'F/S  
 Jonathan Weisenberger  
 Mary Ellen Werkheiser  
 Rosemarie Wertman  
 Tracy and Liam A. Wilkinson '17P  
 Mr. and Mrs. Andrew Winter  
 Olivia C. Wood '23  
 Christine Hughes & Daniel A. Zarrilli '97

**Zoellner Advisory Council**

Oldrich Foucek III '72 '05P '09P, chair  
 Marc Falato '87  
 Valerie Johnson  
 Anne R. Kline '81  
 Michele McGrath  
 Maddie H Scheler '08 '09G  
 LuAnn Silberg

*\*Trade partner*



# Patti's Petals INC.

PRETTY GOOD FLORISTS

Thanks for supporting Bethlehem's local florist.  
Providing quality flowers at fair prices and with  
superior service for 36 years!



South Side Bethlehem • 215 East Third St. • Bethlehem, PA 18015  
610.867.8699 • 800.237.4718 • [www.pattispetalsflowers.com](http://www.pattispetalsflowers.com)



Spring 2024 Season

TWELFTH NIGHT

PINOCCHIO!

DANCE ENSEMBLE CONCERT

DE SALES UNIVERSITY FILM FESTIVAL

THE DROWSY CHAPERONE

Tickets and Information: 610.282.3192 • desales.edu/act1

Follow us @DeSalesUPerformingArts [Facebook] [Instagram] [Twitter] [TikTok]



DISCOVER THE 2024 SEASON



EXPERIENCE 8 UNIQUE PRODUCTIONS

BOOK YOUR TICKETS!

PENNSYLVANIA SHAKESPEARE FESTIVAL

The Professional Theatre at DeSales University

pashakespeare.org | 610.282.WILL [9455]

# Ultra-Fast Ultra-Reliable Internet

STARTING AT

**\$25** /mo.  
for 12 mos\*

\*Price includes autopay & e-bill discount.



**1.800.4.ASTOUND**  
**astound.com**

\*Restrictions apply. See website for details

**CREATE INCOME FOR TODAY...  
LEAVE A LEGACY FOR THE ARTS**



*You can count on  
guaranteed life income from  
a Lehigh University charitable gift annuity.*

**WHY A LIFE INCOME GIFT?**

**FIXED INCOME**—Your charitable gift annuity will provide dependable income to you and/or your loved ones.

**TAX SAVINGS**—You qualify for an income tax deduction the year that you make the gift. If you gift securities, you can save on capital gains taxes.

**LEGACY**—Your gift will enrich the cultural vitality of the Lehigh Valley, and provide remarkable opportunities for generations of talented students and audiences of all ages.

For information or a personalized calculation, please contact  
Lorraine Wiedorn | 610-758-4874 | lms1@lehigh.edu

**Please visit our website at:  
[www.plannedgiving.lehigh.edu](http://www.plannedgiving.lehigh.edu)**

**71st Season**

**CHAMBER MUSIC** LEHIGH VALLEY

**Program information and ticket sales at [www.cmlv.org](http://www.cmlv.org)**

Formerly Chamber Music Society of Bethlehem

**2023-2024 SEASON**

**Frisson Wind Nonet**  
Friday, October 13, 2023  
at 7:30 p.m.

**Viano String Quartet with Rodolfo Leonet, Piano**  
Friday November 10, 2023  
at 7:30 p.m.

**Schumann Quartet**  
Friday, March 1, 2024 at 7:30 p.m.

**Apollo Piano Trio with Misha Amory, violist**  
Sunday, April 21, 2024 at 3:00 p.m.

**Tapestry Vocal Ensemble**  
Sunday, May 19, 2024 at 3:00 p.m.

Admission: \$35 at the door  
Concertgoers 25 and younger enjoy complimentary admission.

All concerts are scheduled to be performed in the Foy Concert Hall on the Priscilla Payne Hurd Campus of Moravian University, EXCEPT for the April 21, 2024 concert which will be presented at Faith United Church of Christ, Center Valley.

**HOLD YOUR SPECIAL  
OCCASION AT  
ZOELLNER!**

Perfect for receptions, recitals,  
parties, ceremonies and more!

CONTACT OUR RENTAL MANAGER:  
**610-758-5654 or [zoellnerartscenter.org](http://zoellnerartscenter.org)**





2023-24 SEASON

The 2023–24 season will be one to remember, and we invite you to join us as we conclude our 125th Anniversary Celebration this season!

- **GALA: Concert & World Premiere CD Recording** – Sat., November 4 at 3pm ■ Packer Memorial Church  
Newly completed scholarly edition of **Mendelssohn's reconstruction of Bach's *Saint Matthew Passion***
- **Christmas in Allentown + Bethlehem** ((o)) \*Livestream option Sat. & Sun., December 9 & 10\* at 4pm  
**Bach Magnificat + *Christen ätzet diesen Tag*, BWV 63 + Carols!**
- **Spring in Bethlehem – BACH INSPIRED** ■ Sun., March 17 at 4pm  
***Bach Ein feste Burg ist unser Gott*, BWV 80 + Selections from our June European tour**
- + **116th Bethlehem Bach Festival** ■ May 10–11 & 17–18, 2024
  - Recorder-phenom **Vincent Lauzer, Festival Artist-in-Residence**
  - The immortal ***Mass in B Minor*** ((o)) Live-stream option May 11
- + **Our Community & Educational Programs**
  - **Bach at Noon** Free and open to the public, second Tuesdays
  - **Greg Funfgeld Family Concert: *Dancing with Bach*** ■ In collaboration with the Lehigh Valley Charter High School for the Arts & Muhlenberg College Dance Department ■ Sun., February 18 at 3pm
- + **2024 European Tour** ■ June 6–16 ■ **Germany & Austria**

**Complete Season Information & Ticketing:**  
BACH.org/season ■ 610-866-4382



Proud Sponsor of  
**Zoellner Arts Center**

## **Navigating Marketing Can Be Tricky**

**Viamedia Can Help You Navigate Through the Digital Landscape**

Viamedia has the power to precisely target your desired audience using marketing solutions which utilize television cable networks, and online, through PCs, tablets, and mobile devices, placing your business in front of the right audience, with the right message, at the right time... *every time.*



**It's All About the Audience!**

  
**viamedia**

A partner with:

**SERVICE ELECTRIC**  
CABLE TV & COMMUNICATIONS



**Blue Ridge**

**SERVICE ELECTRIC**  
EST. 1948 CABLEVISION

610.625.3200 | [viamediatv.com](http://viamediatv.com)

# INFORMATION

## CAN'T MAKE IT? EXCHANGE OR DONATE YOUR TICKETS.

Contact us before the show to either **exchange** for another event, or convert the value of your tickets to a charitable contribution to Zoellner Arts Center. Subscribers and Friends may exchange for free, just \$1 per ticket for all others. Patrons are responsible for any difference in ticket price, exchanges must occur within event category (e.g., Music Dept. ticket for Music Dept. ticket). Excludes rental events. No refunds.

**PARKING IS FREE** in the garage attached to the center for all Presenting Series, Lehigh University Music Dept. and Dept. of Theatre events (excluding some weekday morning events and Christmas Vespers in Packer Chapel). Please note, there may be a parking charge for rental events.

**GROUPS SAVE UP TO 15%** Just buy 10 or more tickets to a performance. Orders incur a one-time per-performance fee of \$6 per group order in lieu of per-ticket fees.

## TAXES AND FEES

Single tickets ordered by phone or online carry fees ranging from \$2.25-\$8.50 per ticket. Tickets purchased in-person may carry fees of up to 50 cents per ticket. The City of Bethlehem Amusement tax is 5% on tickets above \$10, with a cap of \$2 per ticket. Additional delivery charges may apply, check online for details.


# OUR GIFT CERTIFICATES NEVER EXPIRE.

Purchase these at Ticket Services or online  
in any amount and give  
the gift of entertainment.

Certificates cannot be redeemed for rental events.

## CONNECT WITH US!

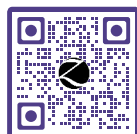
 ZoellnerArts

 zoellnerartscenter

 zoellnerarts

 inzactix@lehigh.edu

 ZoellnerArts



GO TO WEBSITE

[zoellnerartscenter.org](http://zoellnerartscenter.org)

[#artshaveimpact](https://twitter.com/artshaveimpact)

# HOUSE NOTES

**Concessions:** At this time, food and beverage service will likely be limited or eliminated for the time being. Please visit the Covid-19 safety information page on our website for updates and check the “Know Before You Go” email sent to ticket holders the week of the show. Be sure to give Ticket Services your email.

**Please silence all mobile devices upon entering the theatre.**

**To leave theatres during performances,** use the rear doors, if you are able, to minimize disruption of performance.

**Late seating occurs at suitable intervals.** While waiting, you may watch performance on lobby monitors.

**Lost & Found:** Contact Ticket Services. Not responsible for lost or stolen items.

## **Families with Children:**

We welcome children of all ages to our Family Series shows. For performances not listed as Family Series in our brochure, we recommend that attendees be ages four and over. Everyone entering the theatre must have a ticket, and sit quietly in a seat throughout the performance. There are closed-circuit monitors in the lobby which supervised children may use to watch performances if they need a break.

**Accessible seating** can be requested when purchasing tickets. Accessible parking is on levels 1 and 3 in the parking garage.

**Free assistive-listening devices** are available through Ticket Services for amplified performances.

## Questions about your tickets?

**Contact Ticket Services:**  
Phone: 610-758-2787 ext. 0  
Email: [inzactix@lehigh.edu](mailto:inzactix@lehigh.edu)

**Box Office Hours:**  
TUE 12-6; WED-FRI 12-5  
For ticketed events: SAT 2 hours prior to curtain, 90 mins. all other days.

All programs and artists are subject to change. In the event of a cancellation or material change, we will make every effort to contact all ticket holders. We must reserve the right to make any changes whatsoever in the event owing to any unforeseen or unavoidable cause or to cancel the event for any reason beyond our control without being liable to pay any ticket holder compensation for damages other than a ticket of comparable value to an event (based on availability).

Video recording or photography may occur for this performance that might include images of audience members. Your attendance at today’s performance grants permission for further usage of such images.



# ZOELLNER ARTS CENTER

## 2024 SPRING SEASON AT A GLANCE



<b>ERTH'S DINOSAUR ZOO</b>		<b>FAMILY SERIES</b>	.....	<b>FEB 2</b>
<b>LEHIGH UNIVERSITY JAZZ FACULTY</b>			.....	<b>FEB 3</b>
<b>CELLOGAYAGEUM</b>			.....	<b>FEB 9</b>
<b>THE PRINCETON SINGERS</b>			.....	<b>FEB 10</b>
<b>LEHIGH UNIVERSITY PHILHARMONIC</b>			.....	<b>FEB 16, 17</b>
<b>ANTIGONICK</b>			.....	<b>FEB 23-MAR 2</b>
<b>MNOZIL BRASS</b>			.....	<b>FEB 24</b>
<b>LES BALLETS TROCKADERO DE MONTE CARLO</b>			.....	<b>FEB 29</b>
<b>THE RAINBOW FISH</b>		<b>FAMILY SERIES</b>	.....	<b>MAR 2</b>
<b>GARY BARTZ &amp; LU JAZZ REPERTORY ORCHESTRA</b>			.....	<b>MAR 2</b>
<b>EUGENE ALBULESCU</b>			.....	<b>MAR 3</b>
<b>LAS CAFETERAS</b>			.....	<b>MAR 8</b>
<b>LADYSMITH BLACK MAMBAZO</b>			.....	<b>MAR 10</b>
<b>LEHIGH UNIVERSITY CHOIR, DOLCE AND GLEE CLUB</b>			.....	<b>MAR 22, 23</b>
<b>MICHAEL JORGENSEN, VIOLIN AND STEVE BECK, PIANO</b>			.....	<b>MAR 24</b>
<b>NIMBUS DANCE</b>			.....	<b>APR 5</b>
<b>NEW YORK JAZZ REPERTORY ORCHESTRA</b>			.....	<b>APR 7</b>
<b>VIOLIN WOMAN, AFRICAN DREAMS</b>			.....	<b>APR 12</b>
<b>LEHIGH UNIVERSITY WIND ENSEMBLE</b>			.....	<b>APR 14</b>
<b>THIS EMANCIPATION THING</b>			.....	<b>APR 12-20</b>
<b>SPRING STUDENT JAZZ CONCERT</b>			.....	<b>APR 20</b>
<b>LEHIGH UNIVERSITY PHILHARMONIC</b>			.....	<b>APR 26, 27</b>
<b>LEHIGH UNIVERSITY CHORAL ARTS</b>			.....	<b>MAY 3, 4</b>
<b>ACADEMY OF VOCAL ARTS OPERA</b>			.....	<b>MAY 12</b>
<b>DARLENE LOVE: LOVE SONGS</b>			.....	<b>MAY 17</b>

**KEY:** PRESENTING SERIES | MUSIC DEPARTMENT | DEPARTMENT OF THEATRE

